

# Lithium communicator module

## Local or cloud-based lithium-ion battery status and stored data

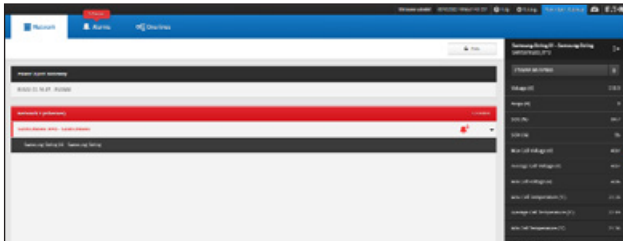
Lithium-ion batteries appear more often in uninterruptible power supply (UPS) applications because of their advantages over traditional UPS battery backup. The lithium battery management system (BMS) collects a large amount of information about battery status, operation and health from the system level all the way down to the cell level. This information can be used for battery monitoring, optimizing battery operation, performance analysis, warranty support, predictive analytics and more.

### How to access, display and log that data?

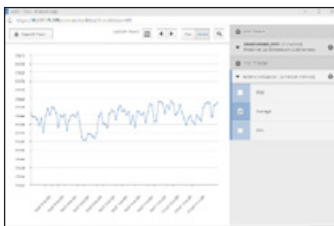
Connecting lithium-ion batteries to an Eaton UPS and setting them up is easy but gathering and storing detailed battery status and data logs requires some user expertise. The Lithium Communicator Module (LCM) simplifies and automates this process and creates an intuitive web browser interface that works with all 3-phase lithium-ion battery Eaton offers.

### System visualization tool

The LCM is an interface accessory in a compact enclosure that can be wall mounted near the battery system and connected to the client's network. The LCM communicates via Modbus with the BMS in the battery cabinet, storing details on battery status, health and alarms in real time. Alarm log, status and variable parameters can be viewed locally on the LCM, over the network while providing cybersecurity for downstream devices.



Main screen shows individual cabinets and system or cabinet level parameters



Parameter data over time



## Benefits

- Clear and simple web browser user interface
- Compatible with all Eaton 3-phase lithium-ion systems
- Local and/or cloud-based data storage
- Securely and safely houses alarm logs and tracks parameters over time

## TECHNICAL SPECIFICATIONS<sup>1</sup>

Operating voltage and current (HV and LV models)	100-240, 1.6A or 380-480 VAC, 0.3A, 2W+GND
Dimensions (H x W x D)	10.6 x 13x 2.7 inches (270mm x 330mm x 69mm)
Weight	7.7 lbs. (3.5 kg)
<b>Data connections</b>	
Battery BMS to LCM	Ethernet, modbus TCP/IP
Setup and local monitoring	Micro USB
Cloud network connection	Ethernet
Customer network connection	Ethernet
LCM to UPS (or to user's building management system)	Ethernet, modbus TCP/IP
Power for external accessories (wireless modem)	24 VDC, x3 ports, 35W total power

1. Specifications subject to change without notice.

For more information, please visit  
[Eaton.com/Lithium](https://www.eaton.com/Lithium)



Eaton  
1000 Eaton Boulevard  
Cleveland, OH 44122  
United States  
[Eaton.com](https://www.eaton.com)

Eaton is a registered trademark.

All other trademarks are property of their respective owners.

© 2021 Eaton  
All Rights Reserved  
Printed in USA  
Publication No. TD153032EN / GG  
July 2021

Follow us on social media to get the latest product and support information.

